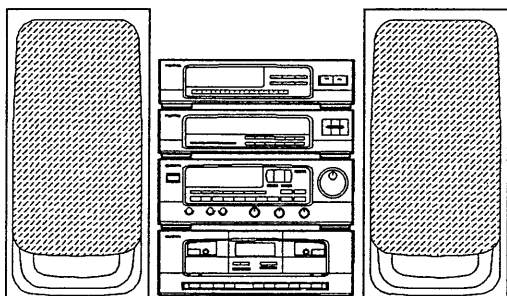


aiwa



Z-D7100M



COMPACT DISC STEREO SYSTEM

- BASIC TAPE MECHANISM: 2ZM-1P1N,R1N
- BASIC CD MECHANISM: KSM-2101ABM

- TYPE: LH,HE,K,EE

REVISION PUBLISHING

- This Service Manual is the "Revision Publishing" and replaces "Simple Manual":
(S/M Code No. 09-94A-083-30I).

- ♠ This service manual contains service information for only altered and added sections of Model Z - D7100M.
If requiring other service information, see the service manual of Model Z - D7000M and Z - D5000M (S/M Code No. 0266 and 0248).

CENTER SYSTEM	AMPLIFIER	CASSETTE DECK	TUNER	GRAPHIC EQUALIZER	SPEAKER	CD PLAYER (OPTIONAL)	TURNTABLE (OPTIONAL)
Z - D7100M LH,HE	MX - Z7100M	FX - WZ7100	TX - Z9100	GE - Z7100	SX - Z9100	DX - Z9100M	PX - E900
Z - D7100M K,EE	MX - Z7100M	FX - WZ7100	TX - Z9100	GE - Z7100	SX - Z9100	DX - Z9100M	PX - E800

SPECIFICATIONS

TUNER TX-Z9100

<FM section>

Frequency range	87.5 MHz to 108 MHz
Usable sensitivity (IHF)	2.2 μ V (75 ohms) 18.2 dBf
Alternate channel selectivity	YH, YLH: 50 dB (\pm 400kHz) YEE, YEZ: 65 dB (\pm 400kHz)
Signal-to-noise ratio	YH, YLH: 70 dB (STEREO) 78 dB (MONO) YEE, YEZ: 70 dB (STEREO) 75 dB (MONO)
Harmonic distortion	0.3% (MONO), 1 kHz 0.8% (STEREO), 1 kHz
Frequency response	20 Hz to 15 kHz (+0.5 dB, -3 dB)
Stereo separation	YH, YLH: 40 dB at 1 kHz YEE, YEZ: 30 dB at 1 kHz
Antenna	75 ohms (unbalanced)

<AM section: YH, YLH>

Frequency range	531 (530) kHz to 1,602 (1,710) kHz
Usable sensitivity	300 μ V/m
Selectivity	22 dB (9 kHz)
Signal-to-noise ratio	53 dB (100 dB input)
Antenna	Loop antenna

<MW section: YEE, YEZ>

Frequency range	522 kHz to 1,611 kHz
Usable sensitivity	400 μ V/m
Selectivity	22 dB (9 kHz)
Signal-to-noise ratio	53 dB (100 dB input)
Antenna	Loop antenna

<LW section: YEE, YEZ>

Frequency range	144 kHz to 290 kHz
Usable sensitivity	1,000 μ V/m
Antenna	Loop antenna

<Timer section and general>

Program timer	"Once" and/or "every"
Sleep timer	Capable of setting in 10 minute increments, 99 minutes maximum
Dimensions (W \times H \times D)	360 \times 88 \times 315 mm (14 $\frac{1}{4}$ \times 3 $\frac{1}{2}$ \times 12 $\frac{1}{2}$ in.)
Weight	2.3 kg (5.28 lb.)

AMPLIFIER MX-Z7100M

Power output	HE, LH: 50 W + 50 W (6 ohms, T.H.D. 10%, 1 kHz) EE, EZ: 40 W + 40 W (6 ohms, T.H.D. 1%, 1 kHz) K: 50 W + 50 W (6 ohms, T.H.D. 1%, 1 kHz) 60 W + 60 W (6 ohms, T.H.D. 10%, 1 kHz)
Harmonic distortion	0.05% (25 W, 1 kHz, 6 ohms)
Input sensitivity (load impedance)	VIDEO 1/DAT: 300 mV (33 kohms) VIDEO 2/AUX: 600 mV (27 kohms)
Signal-to-noise ratio	85 dB
Power consumption	HE, LH: 88 W (System total 117 W) EE, EZ: 215 W (System total 240 W) K: 300 W (System total 330 W)
Dimensions (W \times H \times D)	360 \times 128 \times 332.5 mm (14 $\frac{1}{4}$ \times 5 $\frac{1}{8}$ \times 13 $\frac{1}{8}$ in.)
Weight	HE, LH: 5.2 kg (11.44 lb.) EE, EZ: 5.15 kg (11.33 lb.) K: 5.75 kg (12.65 lb.)

CASSETTE DECK FX-WZ7100

Track format	4 tracks, 2 channels
Frequency response	Metal tape: 20 - 17,000 Hz CrO ₂ tape: 20 - 16,000 Hz Normal tape: 20 - 15,000 Hz
Signal-to-noise ratio	65 dB (Dolby NR ON, Metal tape peak level above 5 kHz)
Wow and flutter	0.12% (WRMS) \pm 0.19% (WPEAK)
Tape speed	4.8 cm/sec. (1 $\frac{7}{8}$ ips) 9.5 cm/sec. (double speed)
Rewind time	120 sec. (C-60)
Fast forward time	120 sec. (C-60)
Recording system	AC bias
Erase system	AC erase
Motor	DC servomotor \times 2
Heads	Playback head \times 1 (deck 1) Record/playback/erasure head \times 1 (deck 2)

Dimensions (W \times H \times D)	360 \times 128 \times 309.5 mm (14 $\frac{1}{4}$ \times 5 $\frac{1}{8}$ \times 12 $\frac{1}{4}$ in.)
Weight	3.0 kg (6.6 lb.)

GRAPHIC EQUALIZER GE-Z9100


Input	210 mV (47 kohms)
Output	210 mV (47 kohms)
Dimensions (W \times H \times D)	360 \times 88 \times 308 mm (14 $\frac{1}{4}$ \times 3 $\frac{1}{2}$ \times 12 $\frac{1}{4}$ in.)
Weight	2.2 kg (4.84 lb.)

SPEAKER SX-Z9100

Cabinet type	3 way, bass reflex
Speaker	220 mm cone type woofer 60 mm cone type tweeter 30 mm ceramic type super tweeter
Impedance	6 ohms
Music power	80 W
Output sound pressure level	90 dB/W/m
Dimensions (W \times H \times D)	290 \times 530 \times 230 mm (11 $\frac{1}{2}$ \times 20 $\frac{7}{8}$ \times 9 $\frac{1}{8}$ in.)
Weight	7.3 kg (16.1 lb.)

COMMON SECTION (See the suffix of MX-Z7100M)

Power requirements	HE, LH: 120/220/240 V AC, selectable, 50/60 Hz EE, EZ: 230 V AC, 50 Hz K: 230 - 240 V AC, 50 Hz
Dimensions (W \times H \times D)	HE, LH: 940 \times 530 \times 332.5 mm (37 $\frac{1}{8}$ \times 20 $\frac{7}{8}$ \times 13 $\frac{1}{8}$ in.) (vertical placement) 1300 \times 530 \times 332.5 mm (51 $\frac{1}{4}$ \times 20 $\frac{7}{8}$ \times 13 $\frac{1}{8}$ in.) (horizontal placement) EE, K, EZ: 912 \times 530 \times 332.5 mm (36 \times 20 $\frac{7}{8}$ \times 13 $\frac{1}{8}$ in.) (vertical placement) 1272 \times 530 \times 332.5 mm (50 $\frac{1}{8}$ \times 20 $\frac{7}{8}$ \times 13 $\frac{1}{8}$ in.) (horizontal placement)
Weight	HE, LH: 27.3 kg (60.1 lb.) EE, EZ: 25.05 kg (55.1 lb.) K: 25.65 kg (56.4 lb.)

- Design and specifications are subject to change without notice.
- Dolby noise reduction manufactured under license from Dolby Laboratories Licensing Corporation.
- "DOLBY" and the double-D symbol  are trademarks of Dolby Laboratories Licensing Corporation.
- The word "BBE" and the "BBE symbol" are trademarks of BBE Sound, Inc.
- Under license from BBE Sound, Inc.

MODEL NO.

MX - Z7100M

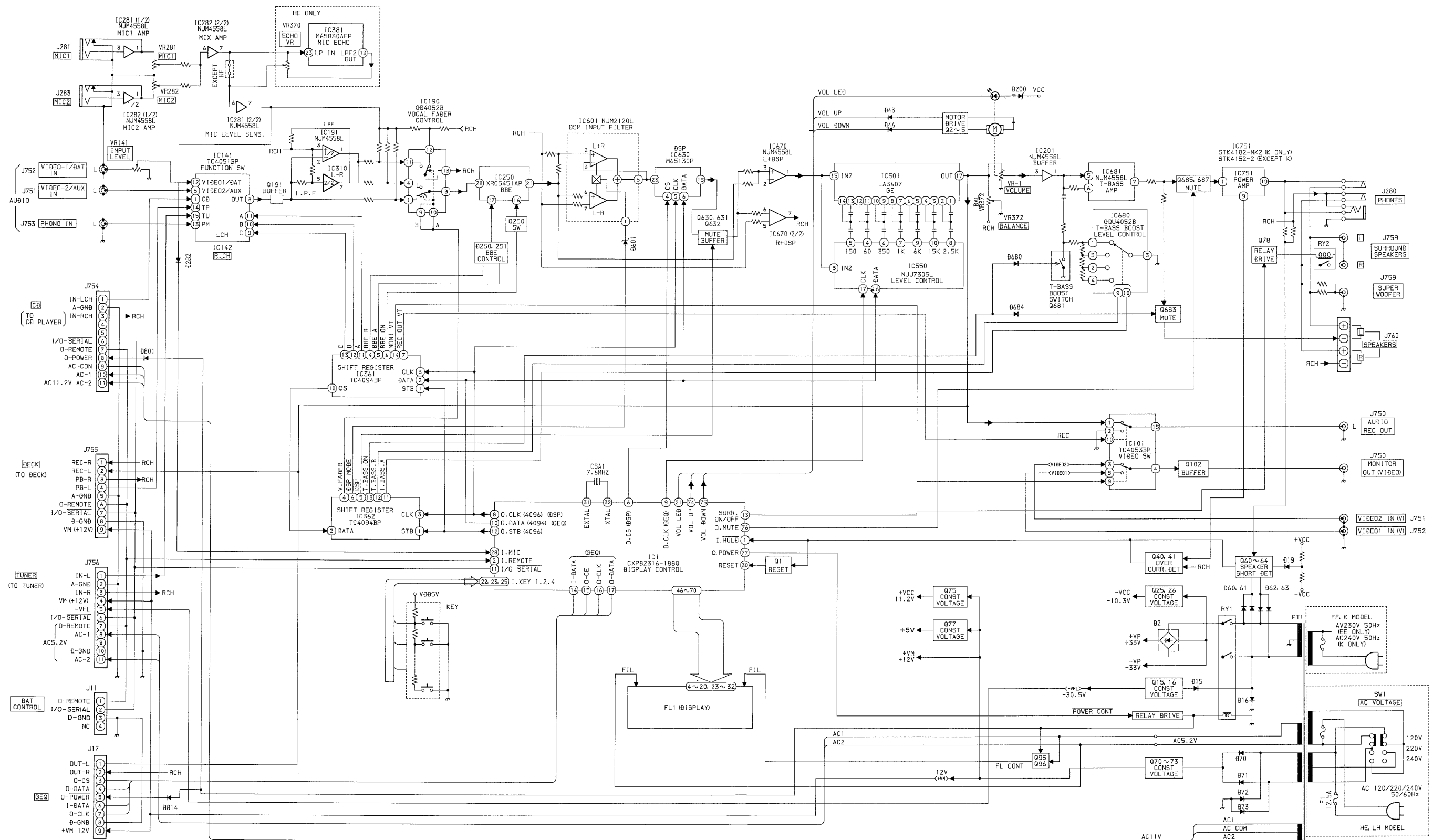
ELECTRICAL MAIN PARTS LIST

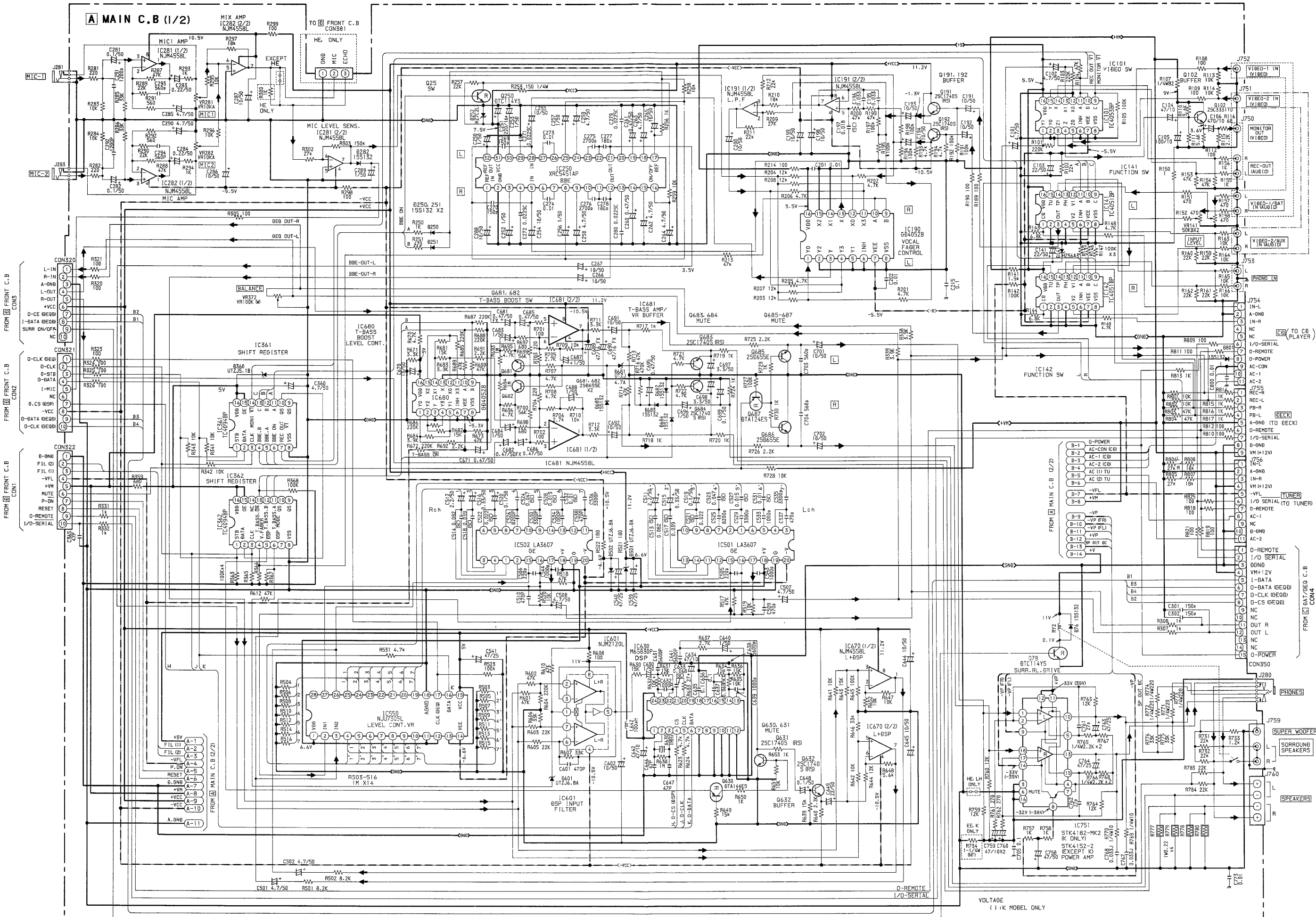
DESCRIPTIONで判断できない物は“REFERENCE NAME LIST”を参照してください。
If can't understand for Description please kindly refer to “REFERENCE NAME LIST”.

REF. NO.	PART NO.	カリ NO.	DESCRIPTION	REF. NO.	PART NO.	カリ NO.	DESCRIPTION
IC				C18	87-010-263-089		CAP, E 100-10
	84-VP2-631-010		IC, CXP82316-188Q	C27	87-010-405-089		CAP, E 10-50 SME
	87-027-938-019		IC, TC4053BP	C28	87-010-101-089		CAP, E 220-16 SME
	87-027-958-019		IC, TC4051BP	C60	87-010-403-089		CAP, E 3.3-50 SME
	87-017-448-019		IC, GD4052B	C61	87-010-374-089		CAP, E 47-10
	87-002-727-019		IC, NJM4558L	C70	87-016-110-099		CAP ELECT 5600-25V SME
	87-002-218-010		IC, XRC5451AP	C71	87-010-405-089		CAP, E 10-50 SME
	87-017-374-019		IC, TC4094BP	C72	87-010-260-089		CAP, E 47-25 SME
	87-017-541-080		IC, M65830AFP<HE>	C73	87-010-101-089		CAP, E 220-16 SME
	87-001-530-019		IC, LA3607	C74	87-010-381-089		CAP, E 330-16 SME
	87-002-429-019		IC, NJU7305L	C75	87-010-374-089		CAP, E 47-10
	87-017-294-019		IC, NJM2120L	C76	87-010-374-089		CAP, E 47-10
	87-017-309-010		IC, M65830P	C77	87-018-208-089		CAP, TC-U 0.047-50 F
	87-001-396-019		IC, STK4182-MK2<K>	C78	87-018-208-089		CAP, TC-U 0.047-50 F
	87-001-582-019		IC, STK4152-2<HE, LH, EE>	C79	87-018-127-089		CAP, TC-U 470P-50 B
TRANSISTOR				C101	87-010-404-089		CAP, E 4.7-50 SME
	87-026-462-089		TR, 2SC1740S (RS)	C102	87-010-404-089		CAP, E 4.7-50 SME
	89-406-555-089		TR, 2SD655E	C103	87-010-406-089		CAP, E 22-50 SME
	89-113-187-889		TR, 2SA1318 TU	C104	87-010-374-089		CAP, E 47-10
	89-213-542-389		TR, 2SB1354EF	C105	87-010-263-089		CAP, E 100-10
	87-026-463-089		TR, 2SA933S (RS)	C106	87-010-221-089		CAP, E 470-10
	89-318-155-089		TR, 2SC1815GR	C141	87-010-406-089		CAP, E 22-50 SME
	89-213-702-019		TR, 2SB1370E	C191	87-010-405-089		CAP, E 10-50 SME
	89-110-155-089		TR, 2SA1015GR	C192	87-010-405-089		CAP, E 10-50 SME
	89-332-665-089		TR, 2SC3266GR	C193	87-010-405-089		CAP, E 10-50 SME
	87-026-215-089		TR, DTC114YS	C194	87-010-405-089		CAP, E 10-50 SME
	87-026-500-089		TR, 2SD2144S, UV (TP)	C198	87-010-405-089		CAP, E 10-50 SME
	89-333-317-889		TR, 2SC3331 TU	C199	87-010-405-089		CAP, E 10-50 SME
	87-026-219-089		TR, DTA144ES	C200	87-010-405-089		CAP, E 10-50 SME
DIODE				C201	87-018-134-089		CAP, TC-U 0.01-16 Y
	87-002-225-019		DIODE, DBF 40C-K10	C202	87-018-134-089		CAP, TC-U 0.01-16 Y
	87-001-574-089		DIODE, 1SR139-200 T31	C215	87-018-214-080		CAP, TC-U 0.1-50 F
	87-020-691-089		DIODE, 1SS132 T-72	C250	87-010-401-089		CAP, E 1-50 SME
	87-002-743-089		ZENER, MTZJ 33B	C251	87-010-101-089		CAP, E 220-16 SME
	87-001-911-089		ZENER, UTZJ4.7A (TAPG)	C252	87-010-401-089		CAP, E 1-50 SME
	87-017-430-090		DIODE, RK14<EE, K>	C253	87-010-401-089		CAP, E 1-50 SME
	87-017-415-090		DIODE, RL203<HE, LH>	C254	87-010-405-089		CAP, E 10-50 SME
	87-002-608-089		DIODE, RL203<HE, LH>	C255	87-010-405-089		CAP, E 10-50 SME
	87-001-916-089		ZENER, UTZJ10B	C256	87-010-401-089		CAP, E 1-50 SME
	87-001-559-089		DIODE, 1SS131 (T-72)	C257	87-010-401-089		CAP, E 1-50 SME
	87-002-430-089		ZENER, UTZJ8.2C	C258	87-010-404-089		CAP, E 4.7-50 SME
	87-027-661-089		ZENER, HZ30L2	C259	87-010-404-089		CAP, E 4.7-50 SME
	87-017-096-089		ZENER, HZS6A3	C260	87-010-400-089		CAP, E 0.47-50 SME
	87-001-913-089		ZENER, UTZJ5.6B	C261	87-010-400-089		CAP, E 0.47-50 SME
	87-001-915-089		ZENER, UTZJ6.8A	C262	87-010-404-089		CAP, E 4.7-50 SME
	87-027-606-089		ZENER, HZ7C2L	C263	87-010-404-089		CAP, E 4.7-50 SME
	87-001-912-089		ZENER, UTZJ 5.1B	C264	87-010-404-089		CAP, E 4.7-50 SME
	87-017-091-089		ZENER, HZS5C1<HE>	C265	87-010-405-089		CAP, E 10-50 SME
MAIN C. B				C266	87-010-405-089		CAP, E 10-50 SME
C1	87-018-214-089		CAP, TC U 0.1-50 F	C267	87-010-405-089		CAP, E 10-50 SME
C2	87-018-214-089		CAP, TC U 0.1-50 F	C269	87-018-121-089		CAP, TC-U 150P-50 B
C4	87-016-303-099		CAP, E 4700-42<HE, LH, EE>	C270	87-018-121-089		CAP, TC-U 150P-50 B
C4	87-010-918-099		CAP, E 4700-50<K>	C273	87-018-134-089		CAP, TC-U 0.01-16 Y
C5	87-016-303-099		CAP, E 4700-42<HE, LH, EE>	C274	87-018-134-089		CAP, TC-U 0.01-16 Y
C5	87-010-918-099		CAP, E 4700-50<K>	C275	87-018-198-089		CAP, TC-U 2700P-16 X
C15	87-010-260-089		CAP, E 47-25 SME	C276	87-018-198-089		CAP, TC-U 2700P-16 X
C16	87-010-384-089		CAP, E 100-25 SME	C277	87-018-122-089		CAP, TC-U 180P-50 B
C17	87-010-764-089		CAP, E 47-63V	C278	87-018-122-089		CAP, TC-U 180P-50 B
				C281	87-010-544-089		CAP, E 0.1-50
				C282	87-010-544-089		CAP, E 0.1-50
				C283	87-010-545-089		CAP, E 0.22-50 SME
				C284	87-010-545-089		CAP, E 0.22-50 SME
				C285	87-010-404-089		CAP, E 4.7-50 SME
				C286	87-010-405-089		CAP, E 10-50 SME

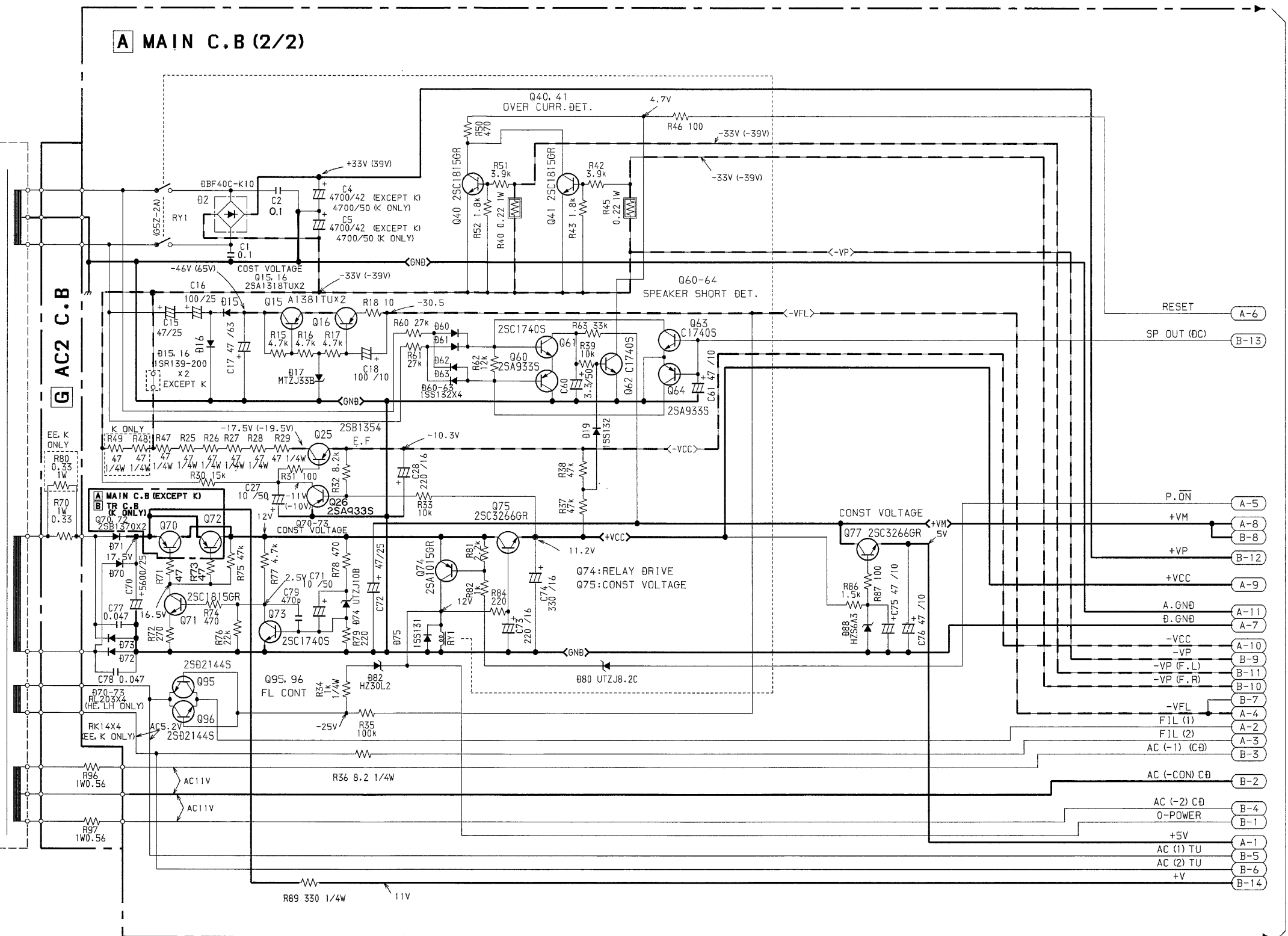
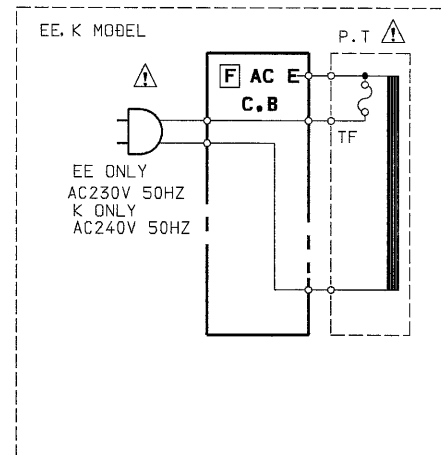
REF. NO.	PART NO.	カリ NO.	DESCRIPTION	REF. NO.	PART NO.	カリ NO.	DESCRIPTION
C287	87-010-405-089		CAP, E 10-50 SME	C688	87-010-401-089		CAP, E 1-50 SME
C288	87-010-405-089		CAP, E 10-50 SME	C689	87-016-096-089		CAP, E 47-16 FX
C289	87-010-401-089		CAP, E 1-50 SME	C690	87-016-096-089		CAP, E 47-16 FX
C290	87-010-404-089		CAP, E 4. 7-50 SME	C691	87-010-401-089		CAP, E 10-50 SME
C291	87-018-195-089		CAP, TC-U 1200P-16 X	C692	87-010-401-089		CAP, E 10-50 SME
C292	87-018-195-089		CAP, TC-U 1200P-16 X	C695	87-010-400-089		CAP, E 0. 47-50 SME
C293	87-018-128-089		CAP, TC-U 560P-50 B	C696	87-010-401-089		CAP, E 1-50 SME
C294	87-018-128-089		CAP, TC-U 560P-50 B	C697	87-010-403-089		CAP, E 3. 3-50 SME
C301	87-018-121-089		CAP, TC-U 150P-50 B	C698	87-010-403-089		CAP, E 3. 3-50 SME
C302	87-018-121-089		CAP, TC-U 150P-50 B	C699	87-010-544-089		CAP, E 0. 1-50
C360	87-010-404-089		CAP, E 4. 7-50 SME	C701	87-010-405-089		CAP, E 10-50 SME
C365	87-018-115-089		CAP, TC-U 47P-50 SL	C702	87-010-405-089		CAP, E 10-50 SME
C501	87-010-404-089		CAP, E 4. 7-50 SME	C703	87-018-128-089		CAP, TC-U 560P-50 B
C502	87-010-404-089		CAP, E 4. 7-50 SME	C704	87-018-128-089		CAP, TC-U 560P-50 B
C505	87-018-123-089		CAP, TC-U 220P	C705	87-018-214-089		CAP, TC-U 0. 1-50 F
C506	87-018-123-089		CAP, TC-U 220P	C758	87-010-408-089		CAP, E 47-50 SME
C507	87-010-404-089		CAP, E 4. 7-50 SME	C759	87-010-374-089		CAP, E 47-10
C508	87-010-404-089		CAP, E 4. 7-50 SME	C760	87-010-374-089		CAP, E 47-10
C509	87-018-127-089		CAP, TC-U 470P-50 B	C761	87-018-111-089		CAP, TC-U 27P-50 SL
C510	87-018-127-089		CAP, TC-U 470P-50 B	C762	87-018-111-089		CAP, TC-U 27P-50 SL
C511	87-010-402-089		CAP, E 2. 2-50 SME	C763	87-010-260-089		CAP, E 47-25 SME
C512	87-010-402-089		CAP, E 2. 2-50 SME	C764	87-010-260-089		CAP, E 47-25 SME
C515	87-010-546-089		CAP, E 0. 33-50 SME	C773	87-018-134-089		CAP, TC-U 0. 01-16 Y
C516	87-010-546-089		CAP, E 0. 33-50 SME	C800	87-018-134-089		CAP, TC-U 0. 01-16 Y
C519	87-010-544-089		CAP, E 0. 1-50	J280	87-099-277-019		JACK, 6. 3 W/S
C520	87-010-544-089		CAP, E 0. 1-50	J281	87-099-064-019		JACK 6. 3 W/S
C525	87-018-203-089		CAP, TC-U 8200P-16 Y	J283	87-099-064-019		JACK 6. 3 W/S
C526	87-018-203-089		CAP, TC-U 8200P-16 Y	J750	81-VP1-634-019		JACK, PIN 3P
C529	87-018-199-089		CAP, TC-U 3300P-16 X	J751	81-VP1-634-019		JACK, PIN 3P
C530	87-018-199-089		CAP, TC-U 3300P-16 X	J752	81-VP1-634-019		JACK, PIN 3P
C533	87-018-131-089		CAP, TC-U 1000P-50 B	J753	87-009-393-019		JACK, PIN 2P EARTH
C534	87-018-131-089		CAP, TC-U 1000P-50 B	J759	84-VP2-630-019		JACK, PIN 3P B. W. R
C535	87-018-199-089		CAP, TC-U 3300P-16 X	J760	87-033-225-019		TERMINAL, SP-4P N
C536	87-018-199-089		CAP, TC-U 3300P-16 X	L642	87-003-152-089		COIL, 100UH
C537	87-018-127-089		CAP, TC-U 470P-50 B	R40	87-022-050-089		RESIS METAL 1W-0. 22J
C538	87-018-127-089		CAP, TC-U 470P-50 B	R45	87-022-050-089		RESIS METAL 1W-0. 22J
C539	87-010-260-089		CAP, E 47-25 SME	R734	87-025-467-089		RES, NF 1-1/4 WJ<EE, K>
C540	87-010-260-089		CAP, E 47-25 SME	R769	87-025-473-089		RES, NF 10-1/4W J
C541	87-010-260-089		CAP, E 47-25 SME	R770	87-025-473-089		RES, NF 10-1/4W J
C543	87-018-131-089		CAP, TC-U 1000P-50 B	R777	87-022-050-089		RESIS METAL 1W-0. 22J
C544	87-018-131-089		CAP, TC-U 1000P-50 B	R778	87-022-050-089		RESIS METAL 1W-0. 22J
C601	87-018-127-089		CAP, TC-U 470P-50 B	R779	87-022-050-089		RESIS METAL 1W-0. 22J
C602	87-010-405-089		CAP, E 10-50 SME	R780	87-022-050-089		RESIS METAL 1W-0. 22J
C630	87-010-401-089		CAP, E 1-50 SME	RY1	87-045-335-010		RELAY, G5Z-2A 12VDC
C631	87-018-201-089		CAP, TC-U 5600P-16 X	RY2	87-045-344-010		RELAY, G5B-1 12V
C632	87-018-131-089		CAP, TC-U 1000P-50 B	VR141	84-VP2-632-019		VR, 50KBX2 RK14K1210
C634	87-010-374-089		CAP, E 47-10	VR281	81-VP1-622-019		VR, 10KA RK11K112
C635	87-018-214-089		CAP, TC U 0. 1-50 F	VR282	81-VP1-622-019		VR, 10KA RK11K112
C636	87-018-214-089		CAP, TC U 0. 1-50 F	VR372	81-VP1-627-019		VOL, 100KW RK11K112
C638	87-018-201-089		CAP, TC-U 5600P-16 X	X630	87-030-172-019		VIB, CER CSB1000J
C639	87-018-131-089		CAP, TC-U 1000P-50 B				
C640	87-010-401-089		CAP, E 1-50 SME	TR C. B<K>			
C641	87-018-201-089		CAP, TC-U 5600P-16 X	DAT/GEQ C. B			
C642	87-010-374-089		CAP, E 47-10				
C644	87-010-405-089		CAP, E 10-50 SME	FRONT C. B			
C645	87-010-405-089		CAP, E 10-50 SME				
C646	87-018-115-089		CAP, TC-U 47P-50 SL	C1	87-010-401-089		CAP, E 1-50 SME
C647	87-018-115-089		CAP, TC-U 47P-50 SL	C2	87-010-401-089		CAP, E 1-50 SME
C648	87-010-544-089		CAP, E 0. 1-50	C3	87-010-405-089		CAP, E 10-50 SME
C649	87-010-406-089		CAP, E 22-50 SME	C5	87-010-550-049		CAP, E 100-6. 3 GAS
C670	87-010-405-089		CAP, E 10-50 SME	C15	87-018-134-089		CAP, TC-U 0. 01-16 Y
C671	87-010-400-089		CAP, E 0. 47-50 SME				
C681	87-016-072-089		CAP, E 0. 47-50 FX	C16	87-018-134-089		CAP, TC-U 0. 01-16 Y
C682	87-016-072-089		CAP, E 0. 47-50 FX	C19	87-018-131-089		CAP, TC-U 1000P-50 B
C683	87-010-401-089		CAP, E 1-50 SME	C21	87-010-401-089		CAP, E 1-50 SME
C684	87-010-401-089		CAP, E 1-50 SME	C22	87-018-214-089		CAP, TC-U 0. 1-50 F
C685	87-010-400-089		CAP, E 0. 47-50 SME	C23	87-018-214-089		CAP, TC-U 0. 1-50 F
C686	87-010-400-089		CAP, E 0. 47-50 SME				
C687	87-010-401-089		CAP, E 1-50 SME	C24	87-018-214-089		CAP, TC-U 0. 1-50 F

BLOCK DIAGRAM (MX – Z7100M)







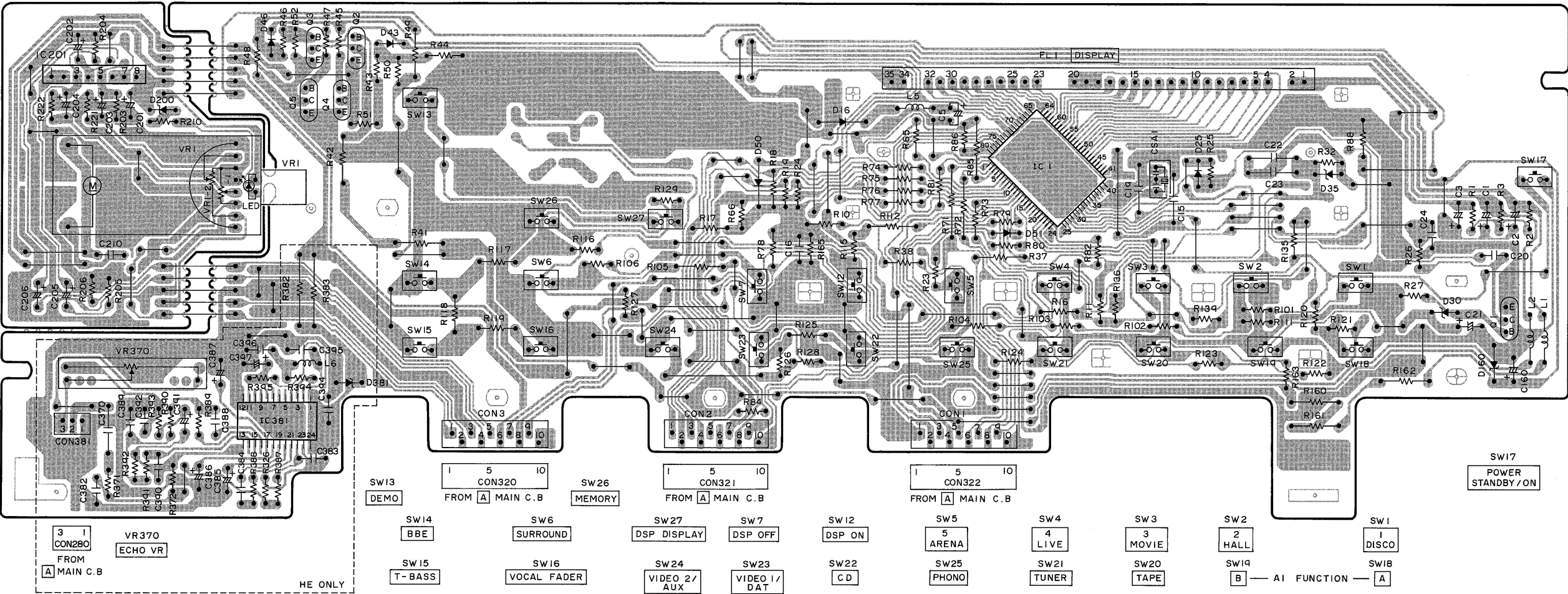


VOLTAGE
() : K MODEL ONLY

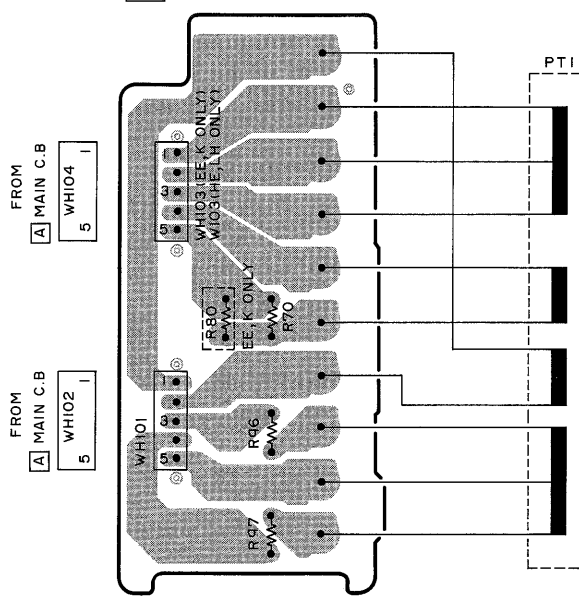
E VOLUME C.B

VR1
VOLUME

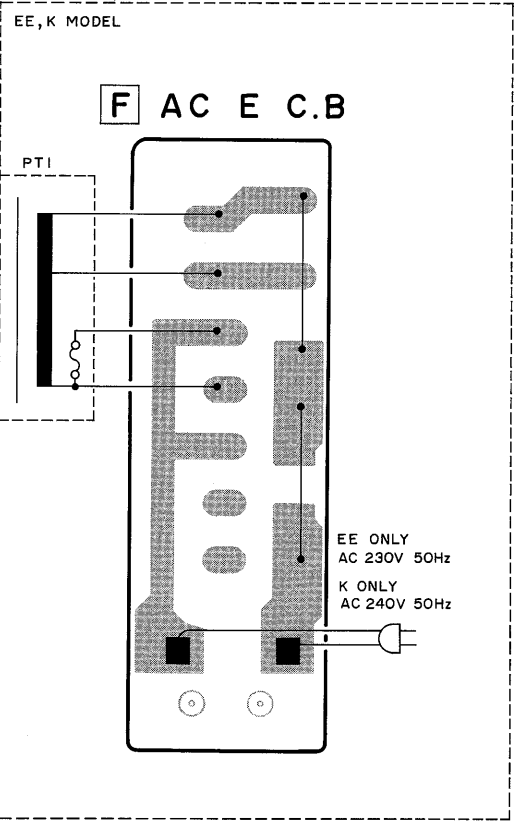
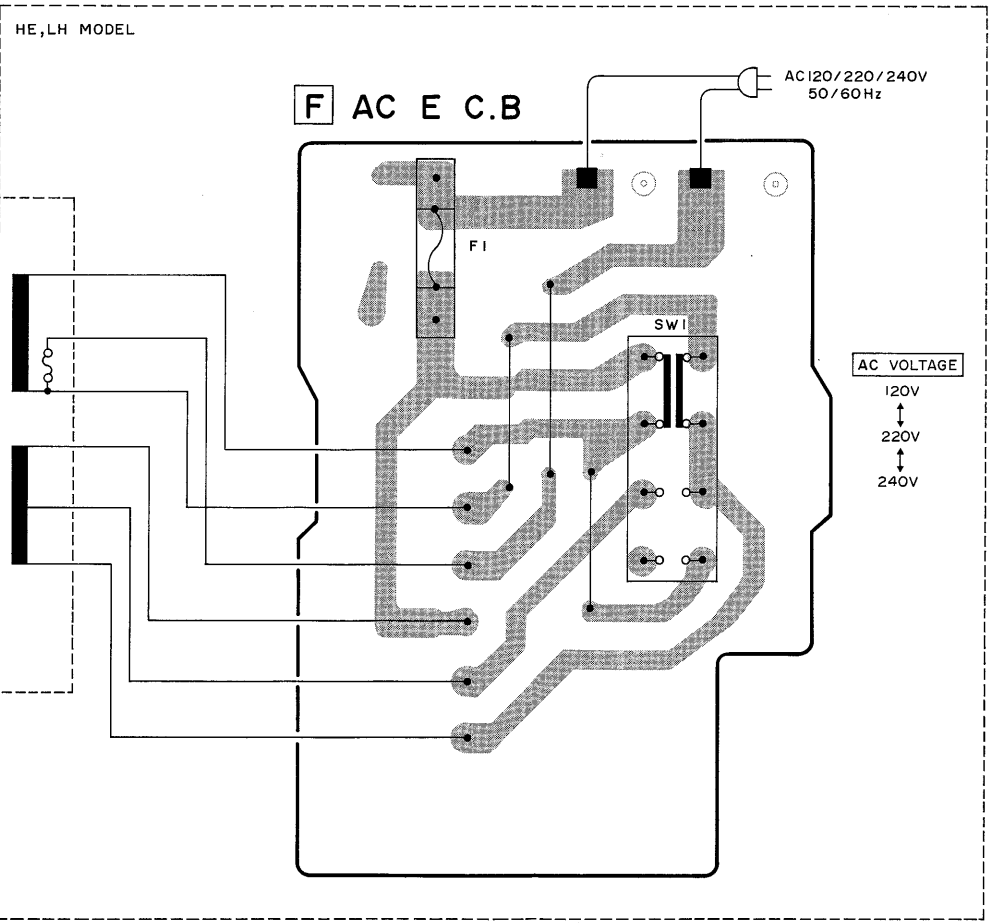
D FRONT C.B



G AC 2 C.B



F AC E C.B



IC DESCRIPTION

IC, CXP82316

Pin No.	Pin Name	I/O	Description
1	PE3/INT3	I	Input "STOP" det.
2	PE4/RMC	I	Remote control input.
3	PE5	—	Not used.
4	PE6	—	Not used.
5	PE7/T0	—	Not used.
6	PB0/CINT	O	Signal to control communications with DSP. (Chip select)
7	PB1/CS0	—	Not used.
8	PB2/SCK0	O	Signal to control communications with DSP/SR. (Clock)
9	PB3/SI0	O	Signal to control communications with GEQ IC. (Clock)
10	PB4/SO0	O	Signal to control communications with DSP/GEQ-IC/SR. (Data)
11	PB5/SCK1	I/O	Signal to control communications with synchro operation serial data.
12	PB6/SI1	O	Signal to control communications with SR. (Strobe)
13	PB7/SO1	O	Surround ON/OFF output.
14	PC0/KR0	I	Signal to control communications with FL μ P. (Input data)
15	PC1/KR1	I/O	Signal to control communications with FL μ P. (Chip select)
16	PC2/KR2	O	Signal to control communications with FL μ P. (Clock)
17	PC3/KR3	O	Signal to control communications with FL μ P. (Output data)
18	PC4/KR4	—	Not used.
19	PC5/KR5	—	Not used.
20	PC6/KR6	—	Not used.
21	PC7/KR7	—	Outputs a volume LED signal.
22	PA0/AN0	I	A/D pin for key input.
23	PA1/AN1		
24	PA2/AN2	—	Not used.
25	PA3/AN3	I	A/D pin for key input.
26	PA4/AN4	—	Not used.
27	PA5/AN5	—	Not used.
28	PA6/AN6	I	A/D pin for microphone level input.
29	PA7/AN7	—	Not used.
30	RST	I/O	System reset input/output.
31	EXTAL	I	System clock input.
32	XTAL	O	System clock output.
33	V _{SS}	—	GND
34	PD0/S0	—	Not used.
35	PD1/S1	—	Not used.
36	PD2/S2	—	Not used.
37	PD3/S3	—	Not used.
38	PD4/S4	—	Not used.
39	PD5/S5	—	Not used.
40	PD6/S6	—	Not used.

Pin No.	Pin Name	I/O	Description
41	PD7/S7	—	Not used.
42	PF0/S8	—	Not used.
43	PF1/S9	—	Not used.
44	PF2/S10	—	Not used.
45	PF3/S11	—	Not used.
46	PF4/S12	O	FL display (SC1-3 light output)
47	PF5/S13	O	Segment output 13
48	PF6/S14	O	Segment output 12
49	PF7/S15	O	Segment output 11
50	S16	O	Segment output 10
51	S17	O	Segment output 9
52	S18	O	Segment output 8
53	S19	O	Segment output 7
54	S20	O	Segment output 6
55	T15/S21	O	Segment output 5
56	T14/S22	O	Segment output 4
57	T13/S23	O	Segment output 3
58	T12/S24	O	Segment output 2
59	T11/S25	O	Segment output 1
60	T10/S26	O	Segment output 0
61	T9/S27	O	Timing output 10
62	T8/S28	O	Timing output 9
63	T7	O	Timing output 8
64	T6	O	Timing output 7
65	T5	O	Timing output 6
66	T4	O	Timing output 5
67	T3	O	Timing output 4
68	T2	O	Timing output 3
69	T1	O	Timing output 1
70	T0	O	Timing output 2
71	V _{FDP}	—	Power supply for FDP
72	V _{DD}	—	Power supply
73	NC	—	Not used.
74	PG0	O	Volume control output. (Volume up)
75	PG1	O	Volume control output. (Volume down)
76	PG2	O	Muting control output.
77	PG3	O	Power output .
78	PE0/EC0/INT0	—	Not used.
79	PE1/EC0/INT1	—	Not used.
80	PE2/INT2	—	Not used.

This service manual contains service information for only altered sections of Model MX – Z7100M.

If requiring other service information, see the service manual of Model MX – Z7000M.

ALTERATION PARTS LIST

MECHANICAL PARTS LIST (MX-Z7100M)

DESCRIPTIONで判断できない物は“REFERENCE NAME LIST”を参照してください。
If can't understand for Description please kindly refer to “REFERENCE NAME LIST”.

REF. NO	PART NO.	カンリ NO.	DESCRIPTION
	1 82-VP2-011-019		CAB, STEEL
△	2 87-034-749-019		AC CORD, H W/PLUG<LH>
△	2 87-050-034-019		AC CORD ASSY, E<HE, EE>
△	2 87-050-032-019		AC CORD ASSY, K 3P S<K>
	3 87-085-184-010		BUSHING, AC CORD D<LH>
	3 87-085-185-010		BUSHING, AC CORD E<EXCEPT LH>
	4 84-VP2-011-019		PANEL, REAR HEJBN<HE>
	4 84-VP2-010-019		PANEL, REAR LHBN<LH>
	4 84-VP2-007-019		PANEL, REAR EEBN<EE>
	4 84-VP2-009-019		PANEL, REAR KBN<K>
	12 84-VP2-012-019		KEY, CRSR
	14 82-VP2-003-119		KEY, FUN
	16 84-VP2-002-019		CAB, FR H<HE>
	16 84-VP2-003-019		CAB, FR LH<LH>
	16 84-VP2-001-019		CAB, FR<EE, K>

■ ACCESSORIES/PACKAGE LIST

DESCRIPTIONで判断できない物は“REFERENCE NAME LIST”を参照してください。
If can't understand for Description please kindly refer to “REFERENCE NAME LIST”.

REF. NO.	PART NO.	カンリ NO.	DESCRIPTION
1	84-VP2-901-019		IB, ESC<S>
2	84-VP2-902-019		IB, GFI<S><EE>
3	84-VP2-633-019		RC, RC-TZ7100MF<HE, LH>
4	84-VP2-634-019		RC, RC-TZ7100ML<EE, K>
7	87-009-724-019		PLUG, ADPTR, IR39<LH>
8	87-009-725-019		PLUG, ADPTR IR40<HE>

MODEL NO.

FX – WZ7100

This service manual contains service information for only altered sections of Model FX – WZ7100.

If requiring other service information, see the service manual of Model FX – WZ5000.

ALTERATION MAIN PARTS LIST

DESCRIPTIONで判断できない物は“REFERENCE NAME LIST”を参照してください。
If can't understand for Description please kindly refer to “REFERENCE NAME LIST”.

ELECTRICAL MAIN PARTS LIST

REF.NO.	PART NO.	DESCRIPTION
IC901	87-017-374-019	IC,TC4094BP
IC902	87-017-374-019	IC,TC4094BP
C513	87-012-154-089	C-CAPS,150P-50 CH
C514	87-012-154-089	C-CAPS,150P-50 CH
C611	87-010-196-089	C-CAPS,0.1-25 F

MECHANICAL PARTS LIST

REF.NO.	PART NO.	DESCRIPTION
1-3	84-VW2-006-019	PANEL,REAR
1-15	09-047-746-010	CAB,FR ASSY
1-17	84-VW2-003-019	BOX,CASS 1
1-18	84-VW2-004-019	BOX,CASS 2

MODEL NO.

TX – Z9100

This service manual contains service information for only altered sections of Model TX – Z9100.

If requiring other service information, see the service manual of Model TX – Z7000.

ALTERATION PARTS LIST

MECHANICAL PARTS LIST

DESCRIPTIONで判断できない物は“REFERENCE NAME LIST”を参照してください。
If can't understand for Description please kindly refer to “REFERENCE NAME LIST”.

REF. NO	PART NO.	カンリ NO.	DESCRIPTION
3	84-VT1-006-019		PANEL, REAR YLHBN<YLH>
3	84-VT1-005-019		PANEL, REAR YHJBN<YHJ>
3	84-VT1-003-019		PANEL, REAR YEZBN<YEZ>
8	84-VT1-001-019		CAB, FR
17	81-VX1-207-110		HLDR, WIRE<YEZ>
18	87-038-039-019		WIRE BINDER<YEZ>

MODEL NO.

GE — Z7100

This service manual contains service information for only altered sections of Model GE — Z7100.

If requiring other service information, see the service manual of Model GE — Z7000.

ALTERATION PARTS LIST

MECHANICAL PARTS LIST

DESCRIPTIONで判断できない物は“REFERENCE NAME LIST”を参照してください。
If can't understand for Description please kindly refer to “REFERENCE NAME LIST”.

REF. NO	PART NO.	カンリ NO.	DESCRIPTION
3	84-VU2-002-019		PANEL, REAR YBN<Y>
3	84-VU2-003-019		PANEL, REAR YJBN<YJ>
8	84-VU2-001-019		CAB, FR

MODEL NO.

SX — Z9100

MECHANICAL PARTS LIST

DESCRIPTIONで判断できない物は“REFERENCE NAME LIST”を参照してください。
If can't understand for Description please kindly refer to “REFERENCE NAME LIST”.

REF. NO	PART NO.	カンリ NO.	DESCRIPTION
1	84-VS1-002-010		PANEL W
2	84-VS1-008-010		PANEL TW. ASSY
3	84-VS1-005-010		GRILL FRAME ASSY
4	84-VS1-602-010		SPEAKER WOOFER
5	83-NSD-604-010		SPEAKER TWEETER
6	83-149-611-010		TERMINAL (YJ, YL)
7	83-133-630-010		INDUCTOR 0.3mH (YJ, YL)
8	87-010-006-010		CAP. E 3.3 μ F (YJ, YL)
9	81-672-612-010		SPEAKER CORD (YJ, YL)

REFERENCE NAME LIST

ELECTRICAL SECTION

DESCRIPTION	REFERENCE NAME
ANT	ANTENNAS
C-	CHIP
C-CAP	CAP, CHIP
C-CAP TN	CAP, CHIP TANTALUM
C-COIL	COIL, CHIP
C-DI	DIODE, CHIP
C-DIODE	DIODE, CHIP
C-FET	FET, CHIP
C-FOTR	FILTER, CHIP
C-JACK	JACK, CHIP
C-LED	LED, CHIP
C-RES	RES, CHIP
C-SFR	SFR, CHIP
C-SLIDE SW	SLIDE SWITCH, CHIP
C-SW	SWITCH, CHIP
C-TR	TRANSISTOR, CHIP
C-VR	VOLUME, CHIP
C-ZENER	ZENER, CHIP
CAP, CER	CAP, CERA-SOL
CAP, E	CAP, ELECT
CAP, M/F	CAP, FILM
CAP, TC	CAP, CERA-SOL
CAP, TC-U	CAP, CERA-SOL SS
CAP, TN	CAP, TANTALUM
CERA FIL	FILTER, CERAMIC
CF	FILTER, CERAMIC
DL	DELAY LINE
E/CAP	CAP, ELECT
FILT	FILTER
FLTR	FILTER
FUSE RES	RES, FUSE
MOT	MOTOR
P-DIODE	PHOTO DIODE
P-SNSR	PHOTO SENSOR
P-TR	PHOTO TRANSISTOR
POLY VARI	VARIABLE CAPACITOR
PPCAP	CAP, PP
PT	POWER TRANSFORMER
PTR, RES	PTR, MELF
RC	REMOTE CONTROLLER
RES NF	RES, NON-FLAMMABLE
RESO	RESONATOR
SHLD	SHIELD
SOL	SOLENOID
SPKR	SPEAKER
SW, LVR	SWITCH, LEVER
SW, RTRY	SWITCH, ROTARY
SW, SL	SWITCH, SLIDE
TC CAP	CAP, CERA-SOL
THMS	THERMISTOR
TR	TRANSISTOR
TRIMMER	CAP, TRIMMER
TUN-CAP	VARIABLE CAPACITOR
VIB, CER	RESONATOR, CERAMIC
VIB, XTAL	RESONATOR, CRYSTAL
VR	VOLUME
ZENER	DIODE, ZENER
サージサプレッサ	SERGESUPPRESSOR
セラコン	CAP,CERA

MECHANICAL SECTION

DESCRIPTION	REFERENCE NAME
ADHESHIVE	SHEET ADHESHIVE
AZ	AZIMUTH
BAR-ANT	BAR-ANTENNA
BAT	BATTERY
BATT	BATTERY
BRG	BEARING
BTN	BUTTON
CAB	CABINET
CASS	CASSETTE
CHAS	CHASSIS
CLR	COLLAR
CONT	CONTROL
CRSR	CURSOR
CU	CUSHION
CUSH	CUSHION
DIR	DIRECTION
DUBB	DUBBING
FL	FRONT LOADING
FLY-WHL	FLYWHEEL
FR	FRONT
FUN	FUNCTION
G-CU	G-CUSHION
HDL	HANDOL
HIMERON	CLOTH
HINGE, BAT	HINGE, BATTERY
HLDR	HOLDER
HT-SINK	HEAT SINK
IB	INSTRUCTION BOOKLET
IDLE	IDLER
IND, L-R	INDICATOR, L-R
KEY, CONT	KEY, CONTROL
KEY, PRGM	KEY, PROGRAM
KNOB, SL	KNOB, SLIDE
LBL	LABEL
LID, BATT	LID, BATTERY
LID, CASS	LID, CASSETTE
LVR	LEVER
P-SP	P-SPRING
PANEL, CONT	PANEL, CONTROL
PANEL, FR	PANEL, FRONT
PRGM	PROGRAM
PULLY, LOAD MO	PULLY, LOAD MOTOR
RBN	RIBBON
S-	SPECIAL
SEG	SEGMENT
SH	SHEET
SHLD-SH	SHIELD-SHEET
SL	SLIDE
SP	SPRING
SP-SCREW	SPECIAL-SCREW
SPACER, BAT	SPACER, BATTERY
SPR	SPRING
SPR-P	P-SPRING
SPR-PC-PUSH	P-SPRING, C-PUSH
T-SP	T-SPRING
TERM	TERMINAL
TRIG	TRIGGER
TUN	TUNING
VOL	VOLUME
W	WASHER
WHL	WHEEL
WORM-WHL	WORM-WHEEL
ジグアーム	ARM,SHAFT
ジグガイド	GUIDE,SHAFT
ストラップ	STRAP
トクナベ	S-SCREW
ヒンジ	HINGE
ヒンジビス	S-SCREW
ビスセレート	SCREW,SERRART

サービス技術ニュース	
番 号	連絡内容
G — —	
G — —	
G — —	

アイワ株式会社
AIWA CO.,LTD.

723019, 921502, 750038

Tokyo Japan